

PRESS RELEASE

Expert forum C-Parts management 2024: Over 400 participants from 8 countries at Würth Industrial Park

Bad Mergentheim/Main-Tauber-Kreis. More efficient, more productive, more profitable: Distinguished experts from industry, trade, science, and consulting showed how to successfully navigate times of continuous change and increasing challenges at the seventh Expert Forum C-Parts management. True to the motto **"Shaping change. Moving forward together."**, more than 400 participants from 8 countries gathered together on Tuesday, 11th June and Wednesday, 12th June 2024 in the Würth Industrial Park in Bad Mergentheim at Würth Industrie Service GmbH & Co. KG.

Würth Industrie Service
GmbH & Co. KG
Pia Schmitt
Press and Public Relations
97980 Bad Mergentheim,
Germany

T +49 7931 91-3409
F +49 7931 91-4000
www.wuerth-industrie.com
Pia.Schmitt@wuerth-industrie.com

13.06.2024

"Since our first expert forum in 2017, we have welcomed over 2,700 guests from across Germany and all over the world to our company location in Bad Mergentheim. Apart from the thought-provoking and trendsetting ideas to find solutions for a secure, resilient supply of production and operating resources, the focus is also on important impulses on market trends as well as global challenges. This not only results in intensive discussions, valuable business networks and long-term cooperations but also particularly in customer-oriented innovations. In this way we want to ensure that our customers have their focus on the future", says Martin Jauss, Chairman of the General Management of Würth Industrie Service.

In the face of Industry 4.0, companies have to deal with changing markets. It is no longer just automation and digitalisation that concern the industrial sector and thereby Würth Industrie Service as a C-Parts partner. Fluctuating prices of raw materials, volatile supply chains, economic policy changes, challenging labour markets and the growing importance of sustainability continue to dominate the current market situation across all countries and continents. Leading experts from industry, trade, science, and consulting talked about the steps that need to be taken to cope with these developments at this year's expert forum. While Martin Jauss, Chairman of the General Management of Würth Industrie Service, provided insights into the world of Würth Industrie Service as an experienced C-Parts partner of the industry, Benjamin Würth, Deputy Chairman of the Supervisory Board of the Würth Group, highlighted the facets of the Würth family business under the motto "Tradition and Innovation". Rainer Bürkert, Member of the Central Managing Board of the Würth Group, spoke on the topic of "Moving forward together - What does the future of Europe as a business hub look like?",

emphasising not only on local, but also on global factors of influence and success of the European business hub.

Prof. Dr. Henner Gimpel, Department of Digital Management at the University of Hohenheim, explained how to manage the future of work with generative AI focussing on the future of a new, changed working environment. A working environment in which humans and artificial intelligence interact together successfully. Marcus Engel, Director Electronics at ZIEHL ABEGG SE, and Uwe Richter, Head of Innovation International Plants at ZIEHL ABEGG SE, also gave a joint keynote speech to show how ZIEHL-ABEGG is succeeding in keeping up with the times by implementing innovations in production and establishing a digital supply chain in electronics production. Lisa-Alexandra Reethen, CEO at Bosch Climate Solutions GmbH, was among those who provided intense topics for discussion. In her presentation titled "The industry and climate protection - a broad field with great opportunities", she introduced the growing importance of sustainability as the main point for all discussions. Olaf Ambros, Director Technics and R&D at baier & michels GmbH & Co. KG, also addressed the topic and spoke about how b&m-ECCO TEC® combines precision, efficiency and sustainability as a production technology.

Supply of production and operating materials of the future

With intelligent system solutions, Würth Industrie Service implements optimal supply concepts for production materials as well as for auxiliary and operating materials such as occupational safety, tools or chemical items – and all this since over 25 years. Not only are inventories managed in a lean manner and unexpected increases and decreases in requirements are recognised early on, but also the costs and procurement efforts are reduced, and at the same time, efficiency and productivity is achieved with maximum process and supply security. And this is paired with a product range of over 1,400,000 items. The participants experienced how this is achieved live on site at an accompanying expert exhibition. From shelving systems with scanner, electronic solutions, smart workstations, modular or even self-propelled vending machines to just-in-time supply with RFID Kanban. CPS®miSELF, the intelligent solution for digital supply management, proves how A-, B- and C-Parts can also be managed with just one system. With the help of a software solution and the proven Kanban systems, CPS®miSELF enables industrial customers to manage parts from different suppliers and to use the automatic reordering service in conjunction with complete

transparency for items outside the Würth range. A wide range of logistics and procurement services also complement the service portfolio along the C-Parts supply. Offering support from the very beginning at every step of the process and development, mainly in design and development – that is the understanding of a holistic partnership. As a result, over 20,000 customers can rely on the expert in all respects. During a tour of the logistics at one of the most modern logistics centres for industrial supply in Europe, the participants also got a personalised insight into the implementation of automation and digitalisation on an area of more than 70,000 square metres. With the help of self-learning robots, driverless transport systems and high-bay and shuttle warehouses and together with its employees, Würth Industrie Service ensures that the right product reaches the customer at the right time and at the right place.

At this year's Expert forum C-Parts management too, valuable contacts were made, numerous ideas along with promising innovations were presented. Now, true to the motto "Shaping change. Moving forward together", it is the matter of actively taking charge of it.

Photo material



Photo 1: Speakers at the Expert forum C-Parts management 2024.jpg

Caption 1: Leading keynote speakers from industry, trade, science and consulting at the Expert forum C-Parts management 2024

Photo source 1: Luisa Heller, Prime Holding

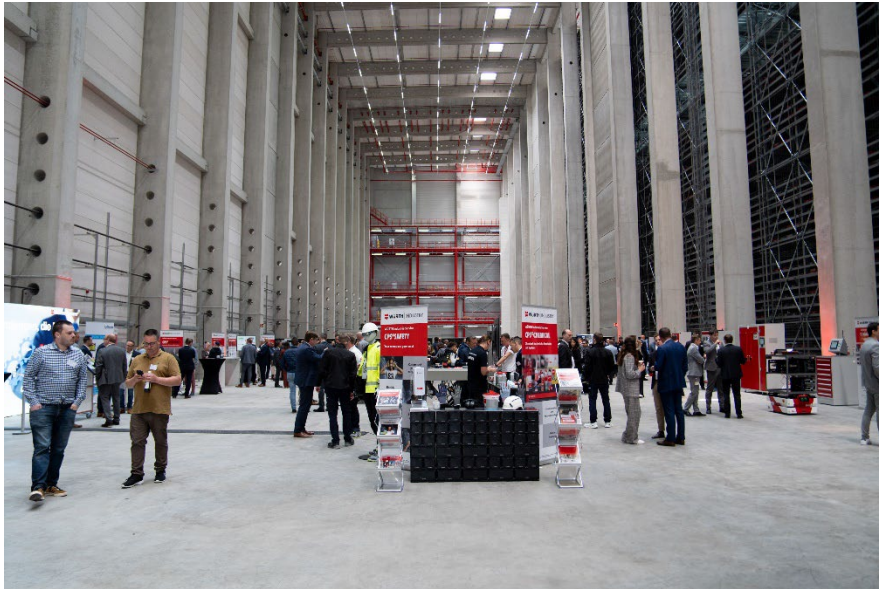


Photo 2: Expert exhibition.jpg

Caption 2: The participants learned more about the innovative system and product solutions for a comprehensive supply of production and operating materials

Photo source 2: Luisa Heller, Prime Holding



Photo 3: Logistics.jpg

Caption 3: During a tour of the logistics, the participants also got a personalised insight into the implementation of automation and digitalisation.

Photo source 3: Luisa Heller, Prime Holding

Brief profile of Würth Industrie Service GmbH & Co. KG

Within the Würth Group, Würth Industrie Service GmbH & Co. KG is responsible for supplying to the industrial sector. Since its foundation in the year 1999, the company is located at the Würth Industrial Park in Bad Mergentheim, Germany with over 1,800 employees.

As a one-stop C-Parts provider, the company offers its customers a specialised product range with over 1,400,000 items: from screws and tools to connection and fastening technology, technical chemicals as well as occupational safety solutions. Aside from the extensive standard product range, the strength of the company lies in its customer-specific, logistical and dispositive supply and service concepts as well as special parts. Under the service brand "CPS® - C-Product Service", the company offers modular solutions customised as per the customer's requirements. These consumption-based and demand-based systems streamline the processes for purchase, logistics and quality assurance while enabling the procurement of small parts in a cost-optimised manner. Logistic and dispositive services such as shelving systems that use scanners or a just-in-time supply using Kanban bin systems play a significant role in increasing productivity.